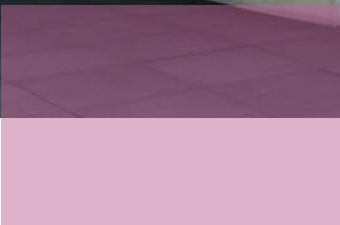
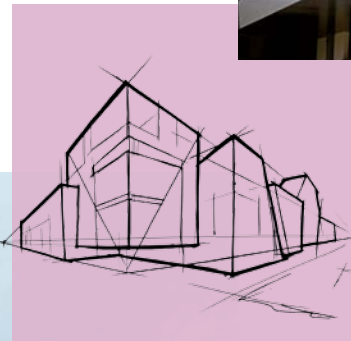


Product Data Sheet Rockpanel Uni



Rockpanel Uni

Key
product
data

Product description

Timeless architectural concepts are characterised by clarity. If your design idea involves a little restraint and a lot of functionality, then Rockpanel Uni is just the thing for you. Long lifetime, quick to install – suitable for facades and roof line – and fits into every budget.

Assortment

Product Line	Thickness	Standard dimensions
Rockpanel Uni	6 mm	1200 x 2500/3050 mm

Surface

The surface of Rockpanel Uni is treated with a four-layer water-borne polymer emulsion paint on one side, in a specific range of colours.

Key product properties

Rockpanel Uni	Rockpanel Uni 6 mm	Unit	Test/classification method
Optical properties			
Colour stability (5000 h)	3 or better	Class on greyscale	ISO 105 A02
Fire			
Fire classification	B-s2,d0	Euroclass	EN 13501-1
Physical properties			
Thickness	6	mm	EN 325
Weight	6.3	kg/m ²	
Density, nominal	1050	kg/m ³	EN 323
Thermal conductivity	0.37	W/m·K	EN 10456
Water vapour permeability S _d (at 23 °C and 85 % RF) Colours	< 1,8	m	EN 12572
Coefficient of thermal expansion (mm/m·K)	10.5	x 10 ⁻³ mm/m·K	EN 438:2 clause 17
Coefficient of moisture expansion (after 4 days) (mm/m)	0.303	mm/m	EN 438:2 clause 17
Mechanical properties			
Bending strength, length and width (f ₀₅)	≥ 24	N/mm ²	EN 310 / EN 1058
Modulus of elasticity m (E)	3567	N/mm ²	EN 310

Fixing distances

Maximum Fixing distances (mm)	Rockpanel Uni 6 mm	
	b max.	a max.
Nail	400	300
Screw	400	300

Rockpanel boards

General
product
information

The Rockpanel boards are produced from compressed natural basalt, a sustainable and readily available volcanic rock and bonded with an organic binder from which all Rockpanel products derive their unique properties. The products combine the advantages of stone and workability of wood.

Sustainability and environment

Rockpanel Durable and FS-Xtra products have been independently certified for their environmental performance by the Building Research Establishment (BRE), complying with all requirements identified in the scheme document SD028. BRE granted Rockpanel an Environmental Product Declaration (Environmental Profiles Certificate No. 427) acknowledging Rockpanel Durable and FS-Xtra board material as amongst the best in their category with A+ and A ratings for various structures. Next to these Environmental Profiles ratings and Greenbook live registration, BRE issued for the Durable and FS-Xtra composition an ECO_EPD in accordance with EN 15804.

The influence on air quality and release of dangerous substances to soil and water has been determined to achieve the European Technical Assessment. The analysis showed Rockpanel boards contain no dangerous materials such as biocides; the manufacture of Rockpanel boards does not involve the use of flame retardants or cadmium. The formaldehyde concentration is ≤ 0.0105 mg/m³ which relates to formaldehyde class E1.

Packaging

The panels are provided with a protective film on the decorative face (with the exception of Rockpanel Metallics White Aluminium/Grey Aluminium, Natural, Lines² and Structures) and are delivered on pallets and with a protective cover and edge protection. The panels must be stored on a dry sub-soil and protected against rain, preferably under a cover. Pallets shall be stacked no more than two pallets high. The panels should be lifted upward when being handled and should not be slid over one another. Protective foam membranes should be placed between the sheets again to protect the surface layer, for example when the panels are stacked after having been sawn.

Visual appearance

Surface quality: Rockpanel boards are produced with the utmost care and individually checked before being approved. In the event of doubts the panels are judged visually for aesthetic flaws, in daylight, without sight enhancements, from a distance of at least 5 metres in front of the surface of the façade element, with an observation angle of 45° (horizontally/vertically).

Batches: Rockpanel boards are produced using incoming inspection, process assurance and quality control by which Rockpanel Colours boards in RAL/NCS colours out of different batches can be combined. However for all other products and for project related orders, the whole order for a given project must be ordered as a single batch.

Maintenance

Depending on the surface treatment, the boards can be cleaned with ordinary cleaning agents such as car shampoo dissolved in lukewarm water. Organic solvents for boards with the ProtectPlus finish are in general also allowed (such as white spirit and acetone), however consult Rockpanel for the correct application method. To remove graffiti, Rockpanel can supply a special cleaner.

The Rockpanel Natural boards can be cleaned with a brush. Stubborn pollution can be removed with a wire brush. The cleaned spot will then become visible and weather again. Do not clean Rockpanel Natural with a solvent or detergent.

Rockpanel Uni

Detailed
product
information

Within our detailed product information section you can read about the impact resistance, suitable sub frames, fire properties and the specified fixings. Also visit www.rockpanel.co.uk for additional information on Rockpanel board material, such as a complete overview of the Rockpanel assortment, guidelines for processing and installation, specifications text, health and safety and application.

Suitable sub frames

Rockpanel Uni can be attached to the building by fixing to a wooden sub frame. The vertical wooden battens should have a minimum thickness of 28 mm.

Properties in relation to fire

Product Grade	Fixing method	Construction build-up	Vertical sub frame***	Classification
Rockpanel Uni 6 mm	Mechanically fixed	Ventilated with EPDM gasket* on the battens	Wood sub frame	B-s2,d0
	Mechanically fixed	Ventilated with Rockpanel strips* (6 or 8 mm) on the battens	Wood sub frame	B-s2,d0
	Mechanically fixed	Non-ventilated, cavity filled with mineral wool**	Wood sub frame	B-s1,d0

* gasket / strip 15 mm wider at both sides than the batten

** Check the pre-conditions for non-ventilated constructions or consult Rockpanel.

*** For a complete overview and description of the end use situation in which the classification is determined, please consult the relevant European Technical Assessment.

Fixings specified for use with Rockpanel Uni

	Ring shank nail	Torx screw
Rockpanel Uni 6 mm	✓	✓
Sub frame ⁽²⁾	Wooden sub frame	Wooden sub frame
Thickness subconstruction ⁽²⁾	≥ 28 mm	≥ 28 mm
Material (body)	Stainless steel material nr. 1.4401 or 1.4578 according EN 10088	Stainless steel material nr. 1.4401 or 1.4578 according EN 10088
Length	32 mm und 40 mm	35 mm
Shank diameter	2,7–2,9 mm	3,3–4,5 mm
Head diameter fixing	6,0 mm	9,6 mm
Hole Ø fixed point	2,5 mm	3,2 mm
Hole Ø moving point	3,8 mm	6,0 mm
Hole Ø slotted point	2,8 x 4,0 mm	3,4 x 6,0 mm

⁽²⁾ In accordance with paragraph "Suitable sub frames"

European Technical Assessment (ETA)**Declarations of Performance (DoP)**

European Technical Assessment ETA-17/0619:	Rockpanel Uni 6 mm	DoP-pending
--	--------------------	-------------

Additional information

The product data sheet Rockpanel Uni clearly specifies the general product properties and is not related to national building regulations. Relevant information about the application of Rockpanel boards related to national building regulations or national guidelines can be found in the Rockpanel instruction guide and on the Rockpanel website. The Rockpanel instruction guide and the website also provide fixing tables related to national annex of the EN 1991-1-4.

Published October 2017. This publication supersedes and replaces all previous datasheets. Subject to alterations. All data are intended to serve as general information about our products and their possible uses. This publication is an extract of the European Technical Assessment, which is the only legally binding document. ROCKWOOL B.V. / Rockpanel disclaims any liability towards possible (typing) errors and incomplete information in this product data sheet. No rights may be derived from the content of this publication.

www.rockpanel.co.uk

ROCKWOOL Ltd **Rockpanel**

Wern Tarw

Pencoed Bridgend

CF35 6NY

Tel.: +44 (0) 1656 863210

Fax: +44 (0) 1656 863611

www.rockpanel.co.uk